

ALPHA PIP SCALPER System Manual

Risk warning

Before you begin trading on Real account please carefully consider your investment goals, risk and experience you have. It should be noted that Forex is a leverage based market. It should be remembered that leverage can work both in your advantage and disadvantage as well. Therefore there is high risk of losing a part or all of your financial input placed on your account and because of that you should remember to trade with the amount of money which you can lose without taking any influential financial damage.

Disclaimer

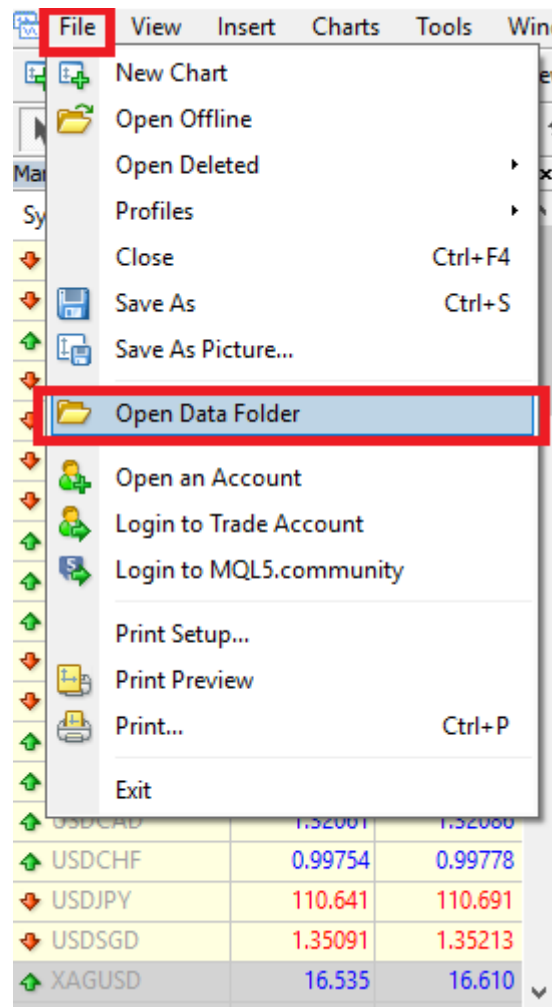
Signals generated by the system are not investment recommendations. All materials included on the website, as well as all system components (indicators, instruction manual) are for educational purposes only. Creators of the system will not take any responsibility for any profit or loss/damage caused by using the system.

Copyright © 2025 www.alphapip.net All rights reserved.

Unless otherwise indicated, all materials on these pages are copyrighted. All rights reserved. No part of these pages, either text or image may be used for any purpose other than personal use. Therefore, reproduction, modification, in any form or by any means, electronic, or otherwise, for reasons other than personal use, is strictly prohibited without prior written permission.

1. Installation proces.

- Open your MT4
- Click 'File/Open Data Folder' from the top tab.



- Copy templates files to the 'Templates' folder.

| | |
|-----------|------------------|
| config | 15.06.2018 14:09 |
| history | 08.05.2018 16:03 |
| logs | 16.06.2018 09:40 |
| MQL4 | 08.05.2018 16:01 |
| profiles | 13.06.2018 10:20 |
| templates | 15.06.2018 22:52 |
| tester | 13.06.2018 10:44 |
| origin | 08.05.2018 16:01 |

- Copy indicator files to the 'MQL4>Indicators' folder.

| | |
|------------|------------------|
| Experts | 08.05.2018 16:02 |
| Files | 08.05.2018 16:01 |
| Images | 08.05.2018 16:01 |
| Include | 08.05.2018 16:01 |
| Indicators | 15.06.2018 22:29 |
| Libraries | 08.05.2018 16:02 |
| Logs | 16.06.2018 09:40 |
| Presets | 08.05.2018 16:01 |
| Projects | 08.05.2018 16:01 |
| Scripts | 08.05.2018 16:02 |

- Restart your MT4

- Open your favourite chart. Press the right mouse button and pick Alpha Pip template.

AlphaPip1 (SCALPING)

It's characterized by dynamic signals as well as the largest potential profit with increased risk. If you are familiar with catching the quick market movements, you should choose this trading mode.

Please note that the signals are very fast (recommended for experienced traders).

AlphaPip2 (DAYTRADING)

Provides universal mode, with balanced signals with limited risk.

This mode is recommended for beginners as well as experienced traders.

AlphaPipX -AlphaMode (Scalping/Fast Daytrading)

Alpha mode provides signals dedicated for statistically the biggest traders group (scalpers and fast daytraders). This mode is between scalping and daytrading.

ENTRY EXAMPLE (SELL SIGNAL)

Signals are very easy to read. When a new signal is printed, you will receive an alert.

NOTE: Please wait till the candle close and alert before opening a trade.

BLUE BOX – BUY SIGNAL

RED BOX – SELL SIGNAL



You can follow the signals as they appear.

SELL THE RED BOX.

CLOSE THE TRADE WHEN BLUE BOX APPEARS AND OPEN BUY TRADE

CLOSE THE TRADE WHEN RED BOX APPEARS AND OPEN SELL TRADE



STOP LOSS

Stop loss should be placed below blue box (for buy trade) and above the red box (for sell trade).



Handful of advice

- Before trading, always make sure that the market does not expect any important data. If something 'big' appears in the news calendar, it's better to wait for their announcement and later join the further movement.
- Always try to trade on major sessions when the volatility is the greatest (the best sessions are usually: EU and US).
- You can pick any trading timeframe for trading, but the most universal and common are typical DT TFs like M5 or M15. It's a good place to start trading with the software.
- Try the system on demo account first. See how it works, and which trading mode fits your trading style best.
- Do not overtrade. Try to keep 1-2 trades open at the same time. (it's easier to control the risk).
- MM is the key with any trading system. Try put only 1-2% of your account on any trade.

If you need any assistance let us know!

support@alphapip.net